

44 Old Bridle Path, Toronto, ON M4T 1A7

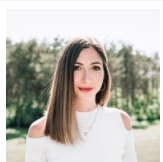
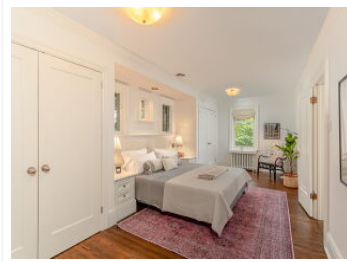
\$3,190,000



View virtual tour at:
<https://tours.bhtours.ca/fd179e90/>



The most exclusive setting in Rosedale/Moore Park. 44 Old Bridle Path is a perfect hideaway, with skyline views of the city only minutes to Yorkville and the shops of Summerhill. Lush trees canopy over the private drive, with an abundance of parking, as the home sits perfectly overlooking the ravine. Red brick facade, walnut floors, spacious kitchen, plenty of storage and an elegantly manicured, maintenance free yard. Easy walk to Rosedale's finest parks including Chorley, Rosedale park and Brickworks trail.



Carly Picov

(416) 602-9912
carlypicov@gmail.com
<http://www.carlypicov.com>

Harvey Kalles

Brokerage

(416) 441-2888

