

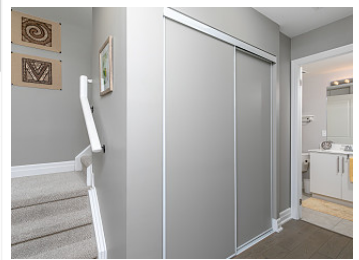
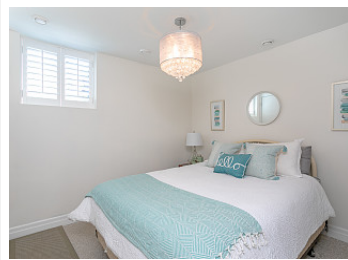
702-380 Wallace Avenue, Toronto, ON M6P 3P2



View virtual tour at:  
<https://tours.bhtours.ca/702-380-wallace/>



Welcome to #702 - 380 Wallace Avenue! Beautiful 2 bedroom + den, 3 bathroom suite in hot Junction Triangle! Big, functional open concept layout with over 1,100 sqft of living space. The large living room with bright floor to ceiling windows and convenient powder room is the ideal space for entertaining or family time. The modern kitchen comes complete with stainless steel appliances and eating area. Lower level features the 2 bedrooms, peacefully tucked away. The stunning master suite comes with walk-in closets and 3 piece ensuite, plus bright floor to ceiling window. The second bedroom includes a walk-out to the private terrace with gas BBQ hook up. Perfect for those who need quick access to everything; only minutes to UP Express/Pearson Airport, and only a short walk to the best restaurants, cafes, parks, Charles Sauriol French school, Railpath trail,



Trust Realty Group

(647) 346-4600  
[office@trustrealtygroup.ca](mailto:office@trustrealtygroup.ca)  
<http://trustrealtygroup.ca>

Keller Williams Referred Urban Realty

(416) 572-1016

