

3937 Thomas Alton Boulevard, Burlington, ON L7M 2A4



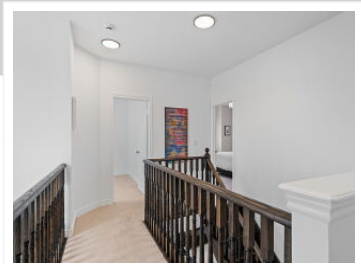
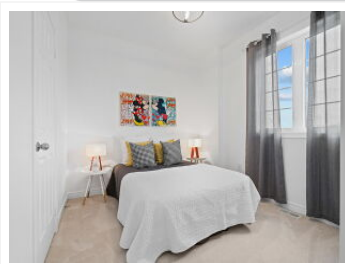
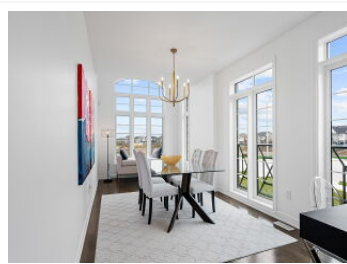
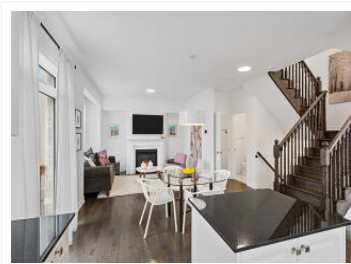
View virtual tour at:  
<https://tours.bhtours.ca/3937-thomas-alton-boulevard-burlington/>



Have your cake and eat it too! Get away from it all and enjoy tranquility, with all your modern conveniences around the corner. Located in Burlington's highly desired Alton Village, 3937 Thomas Alton Blvd is part of the community's newest phase. Walking distance to schools, shopping, restaurants, parks and more!

The prime corner lot brings beautiful, natural lot into your home. Enjoy the fully fenced backyard off of the kitchen and family room. And upstairs, your four spacious bedrooms are ready for a growing family and/or your overnight guests. You also have direct access to your 2-car garage. Plus, add your own personal touch to finish your basement exactly to your needs.

With quick access to the 407 ETR, the QEW and Highway 5, living here is easy, whether you're commuting or working from home.



**Ana Santos**  
Sales Representative

(647) 232-7317  
[ana@asantos.ca](mailto:ana@asantos.ca)  
<http://www.asantos.ca>

**Harvey Kalles Real Estate Ltd.**

Brokerage

(416) 441-2888  
<https://harveykalles.com>

